

DURAFLOOR

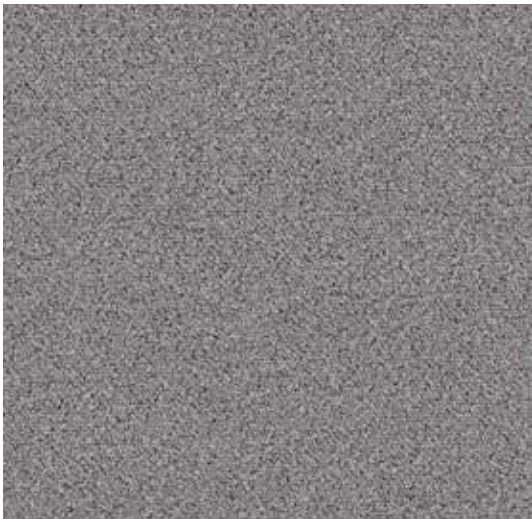
NEBULA

heavy contract carpet tiles

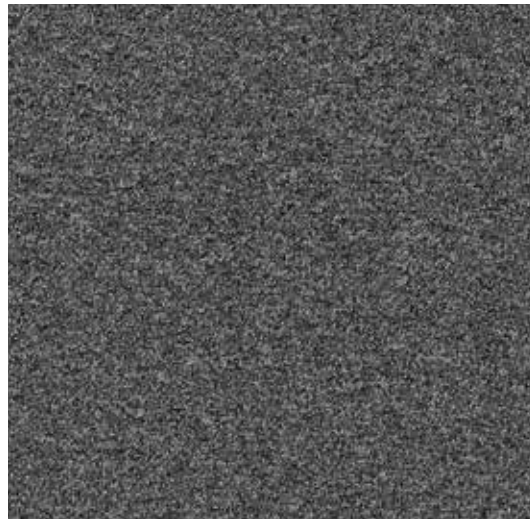


NEBULA

Nebula is a range of hard wearing carpet tiles in 6 popular colours. Its construction meets the budget and design requirements of schools, commercial offices and many institutions. A solution dyed nylon, with a high fire resistant classification, it is both durable and practical.



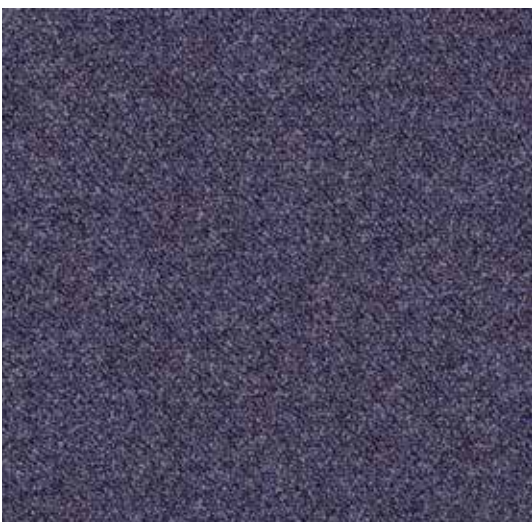
8422 Moonstone



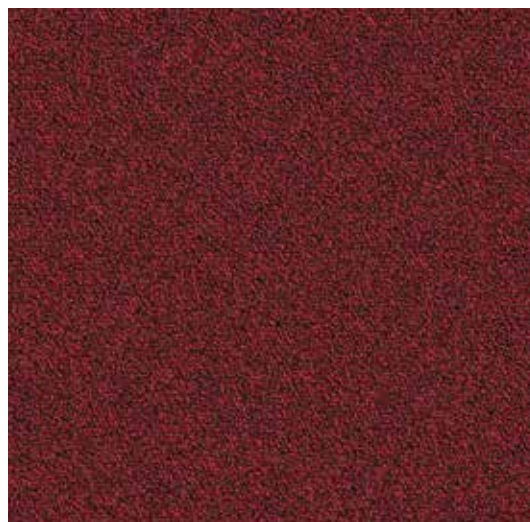
8410 Luna



8428 Kepla



8406 Cirrus



8436 Solar



8433 Neptune

NEBULA

Product Specifications

Dimensions



Tile Size
500 x 500mm



Total Weight
3,780g/m²



Pile Weight
450g/m²



Total Thickness
5mm

Construction

Pile Type
100% Solution Dyed BCF Nylon

Tuft Density
157,600/m²

Laying Pattern

Broadloom, Quarter Turn, Brickbond or Ashlar

Technical Data



Fire Rating
ISO 13501-1 Bfl-S1

Colour Fastness (Rubbing)
ISO 105-X12 >4



Light Fastness
ISO 105 ≥6



Dimensional Stability
BS EN 986: max 0.2%



Antistatic
EN 6356 <2kV
Permanently Antistatic



Castor Chair Test
EN985/A



Wear Rating
BS EN 1307 33

Guarantee

7 years

01592 630 030
uksales@duraflor.com

DURAFLOOR.COM

All colours are for illustrative purposes only.
If colour choice is critical, please request a sample